

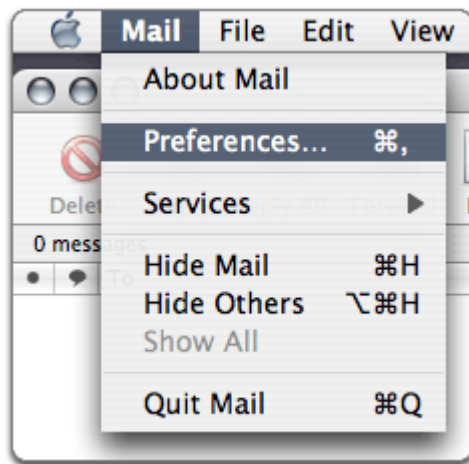
How do I configure my POP mail account in Apple Mail?

Setting Up Your Apple Mail

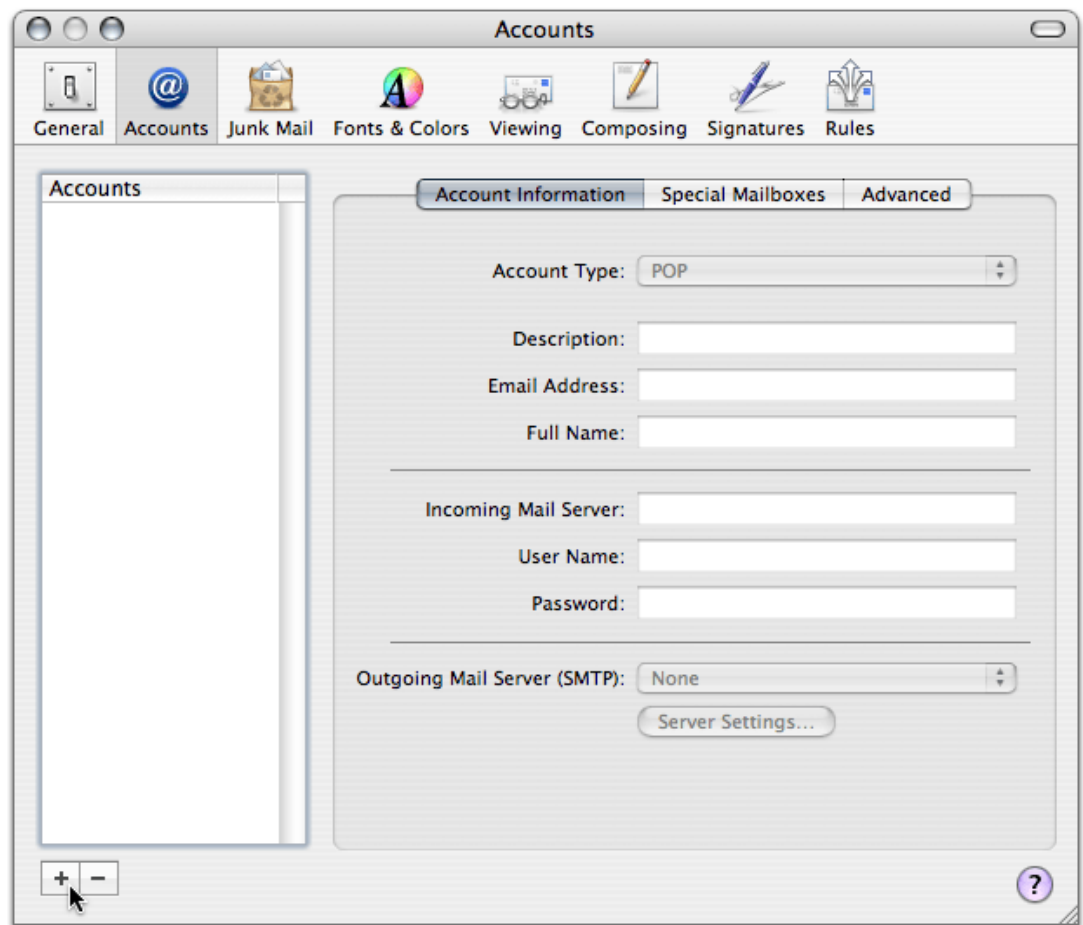
This tutorial shows you how to set up Apple Mail to work with your email account. First, you need to add the mail account to your control panel. Once you have added the mail account, you can continue setting up your Apple Mail for mail access.

To Set Up Your Apple Mail

1. From the Mail menu, select **Preferences**.



2. Select the Accounts tab, and click the **plus sign(+)** at the bottom of the Accounts box.



3. In the Account Information screen, select **POP** from the **Account Type** list, and enter your information as follows:

Description

Enter the name of your account for example: My Mail, Work, or Home.

Email Address

Enter your email address (this must be configured in your control panel first).
Example: jsmith@yourdomain.com

Full Name

Enter your name. This name will display to readers of your e-mail messages.

Incoming mail server (POP3)

Your incoming server is mail.yourdomain.com, where "yourdomain.com" is the name of your domain.

User Name

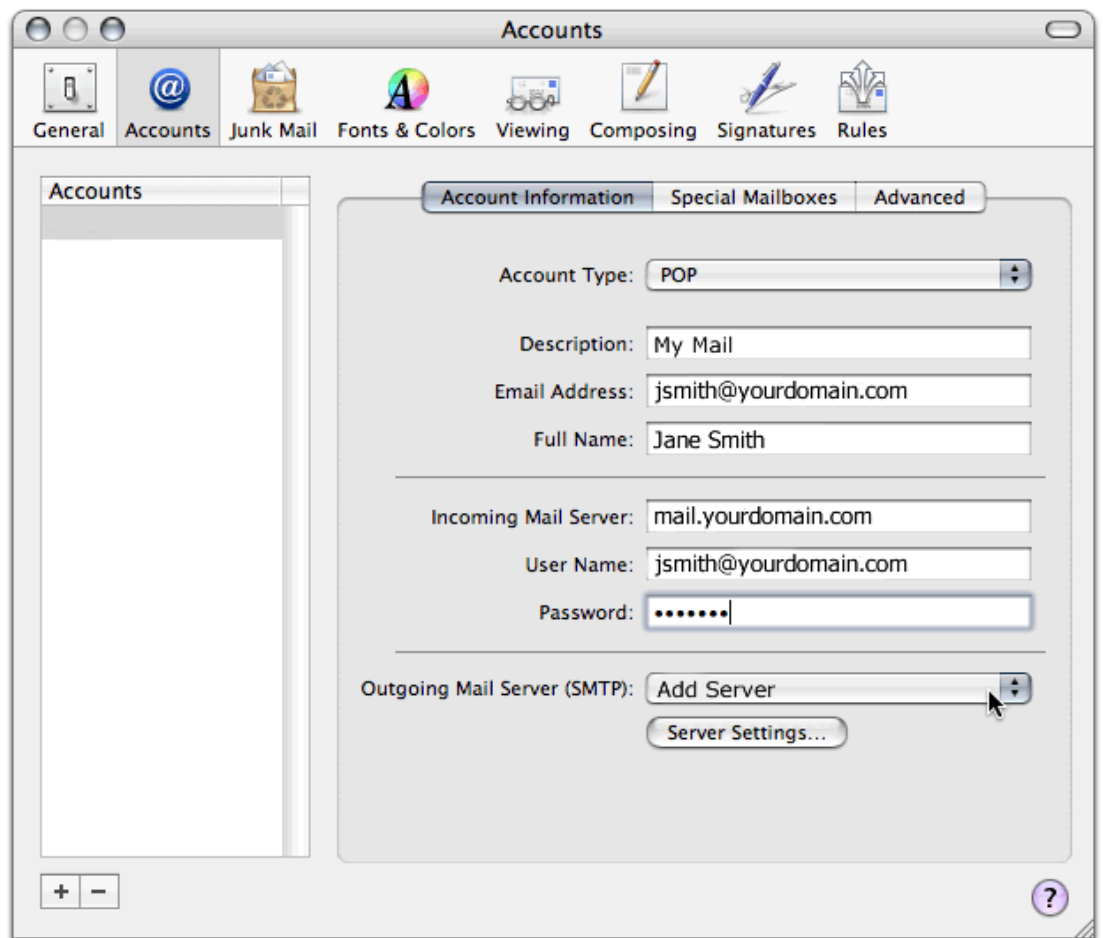
Enter your email address (this must be configured in your control panel first).

Password

Enter the password you set up for your email account (the one you used when you created the mail account in your control panel).

Outgoing Mail Server (SMTP)

Select **Add Server** from the list.



4. When the SMTP Server Options window displays, type *mail.yourdomain.com* in the **Outgoing Mail Server** field and leave the **Server Port** setting at 25 or change it to 26.
5. Under the **Authentication** list, select **Password** and enter your SMTP user name (full email address) and password.
6. Click **OK**.

NOTE: If your ISP blocks the default port 25 to our network you will need to change the port to 26 which is our secondary SMTP port setup for such cases.

SMTP Server Options

Outgoing Mail Server:

Check with your system administrator before changing any of the advanced options below:

Server port:

Use Secure Sockets Layer (SSL)

Authentication:

User Name:

Password: